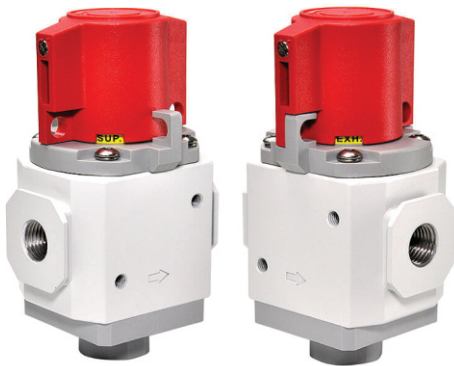


# NEW PRODUCT

## CLOSURE VALVE FOR UNIT OF 302 SERIES MAINTENANCE



### CHARACTERISTICS

- ° Caliber. 8A, 10A, 15A
- ° Port size. Rc1 / 4 (8A), Rc3 / 8 (10A), Rc1 / 2 (15A)
- ° Port number. 3
- ° Position number. two
- ° Working environment. Air
- ° Pressure range. 0.1-1 Mpa
- ° Ambient temperature. -5- + 60 ° C
- ° Weight. 304g - 397g

**NEW!**